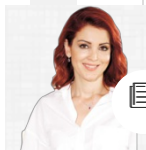


H
T



YAZARLAR







A light gray rounded rectangular container. At the top left is a red circle with a white minus sign. Below it is a white rounded rectangular input field. The container is filled with horizontal dashed lines, suggesting a list or form structure.

Three stacked light gray rounded rectangular blocks, separated by thin horizontal lines, representing a list of items or sections.

